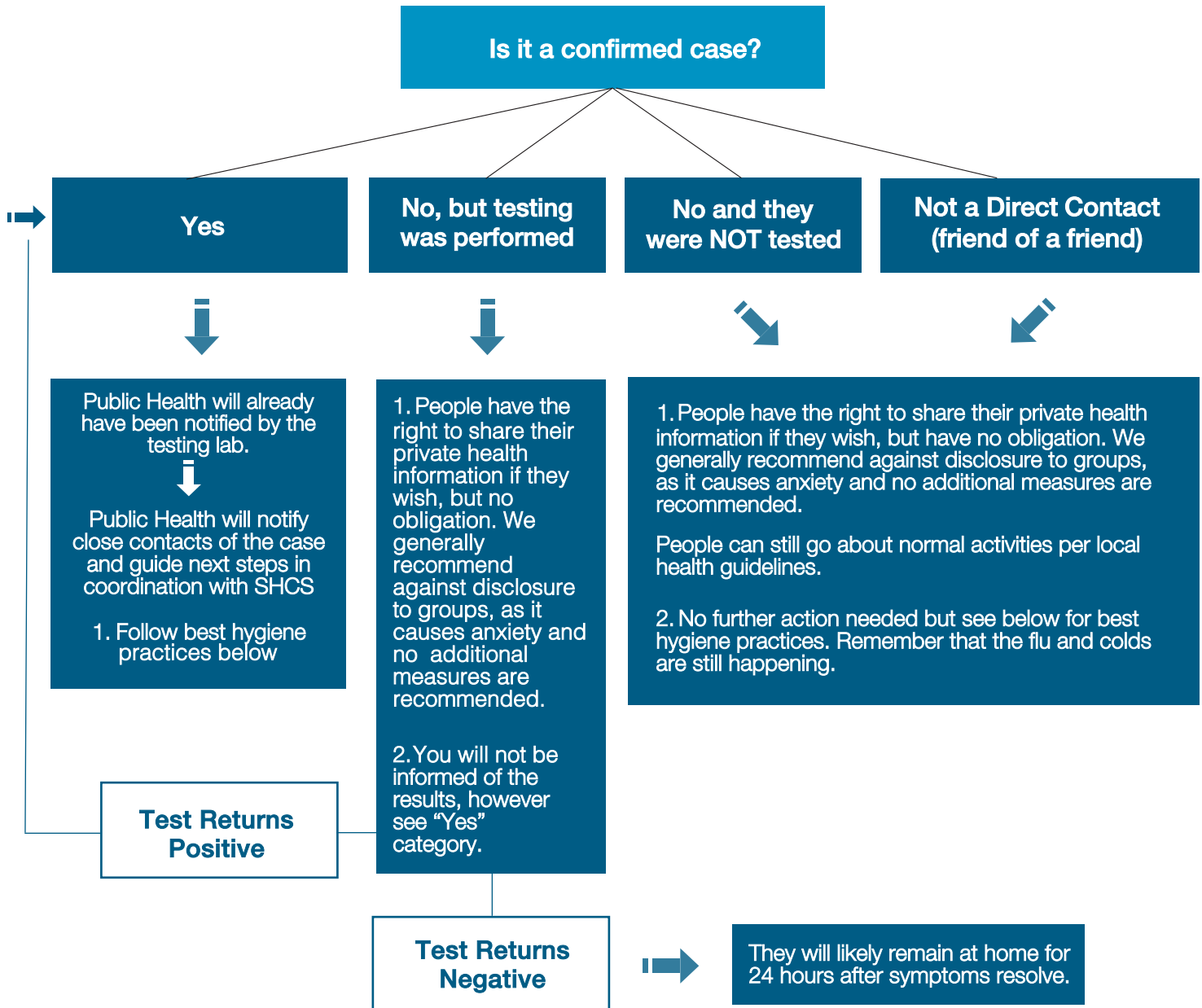


# What To Do If You Think You Were In Contact With A COVID-19 Case

Do NOT share anyone else's private health information (PHI).



## Hygiene Best Practices

All students and employees should:

- Monitor for symptoms and stay home if sick, handwash, and practice social distancing
- Protect vulnerable populations (send home those caring for elderly, chronically ill) or those who consider themselves in the vulnerable population

Stay informed with COVID-19:  
[coronavirus.ucsf.edu](https://coronavirus.ucsf.edu)  
[cdc.gov/coronavirus](https://cdc.gov/coronavirus)